

A glowing blue microchip is centered on a circuit board. The chip has a grid-like pattern on its surface and is surrounded by intricate circuitry. The overall image has a futuristic, high-tech aesthetic with a blue color palette.

# **TPC/ECIA Semiconductor Market Survey**

**June/July 2024**

# June/July '24 Survey Summary

*Survey Date: 7/11-14 Respondents: ~5,100 Location: Worldwide (~80% Asia) Who: Active Electronics Industry Professionals  
Response Composition (multiple choices): Industrial 36%, Auto 22%, Comm 20%, Computing 23%, Mobile 23%, Data Ctr 20%, Other 16%*

- Our latest monthly survey continues to show positive trends in C3Q & C4Q sentiment; pointing to what we believe is a recovery and a strong pickup in outlook as we head into C4Q and early CY25. Two of the more positive indicators were the C3Q booking's outlook and demand outlook being at a 6-year high. Additionally, ratio of decreasing vs. increasing cancellations are at a 7-year low.
- The survey showed the C2Q24 outlook (slide 3) improved vs. last month and has continued to show improvement over the last few months with 46% see it as better vs. 45% last month. The bookings outlook for C2Q was also largely unchanged.
- Our C3Q24 outlook (slide 4) also showed improvement vs. last month. 68% see it as better vs. 66% last month with the seasonality outlook also improved. The bookings outlook for C3Q was slightly weaker but remained much stronger than in previous years.
- Cancellation/reschedules expectations (slide 7) have decreased to their lowest level in 7 years over the last 3 months indicating that inventory depletion has reached final stages and restocking can begin.
- Most key product inventories and availability (slides 8 & 9) remained in the average range. However, NAND availability has weakened slightly over the past 2 month.
- Inventory levels (slide 10) showed modest increases for C3Q.
- Pricing trends (slide 11) are starting to stabilize and in some instances starting to increase in some areas (high end MCU's).

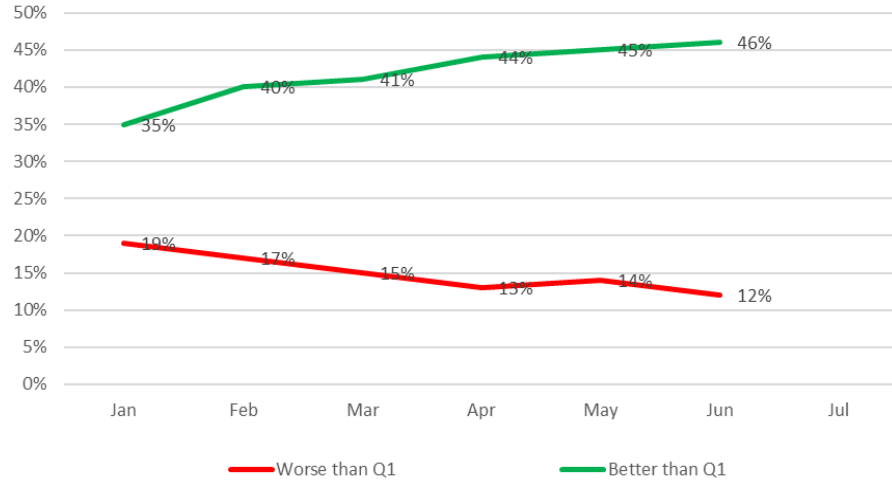
# Survey Question Definitions

- **Outlook**
  - Do you anticipate end demand (billings) for the current quarter better, worse or the same vs. the previous quarter. Same question for the upcoming quarter.
- **Seasonality**
  - Do you see end demand (billings) for the current quarter seasonally better, worse or the same vs. the same quarter in previous years. Same question for the upcoming quarter.
- **Bookings**
  - Do you anticipate bookings for the current quarter better, worse or the same vs. the previous quarter. Same question for the upcoming quarter.
- **Inventory**
  - Do you see inventory for the current quarter better, worse or the same vs. the previous quarter. Same question for the upcoming quarter.

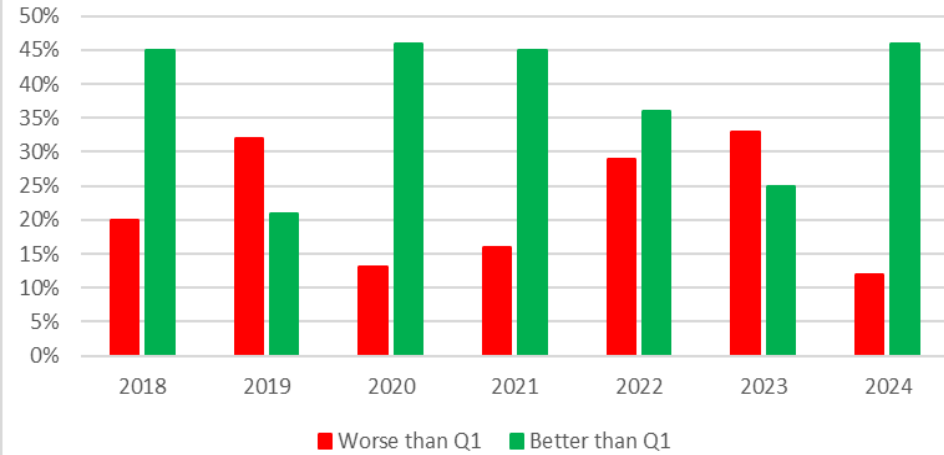
# C2Q24 Outlook

C2Q's outlook has continued to improved throughout the qtr.

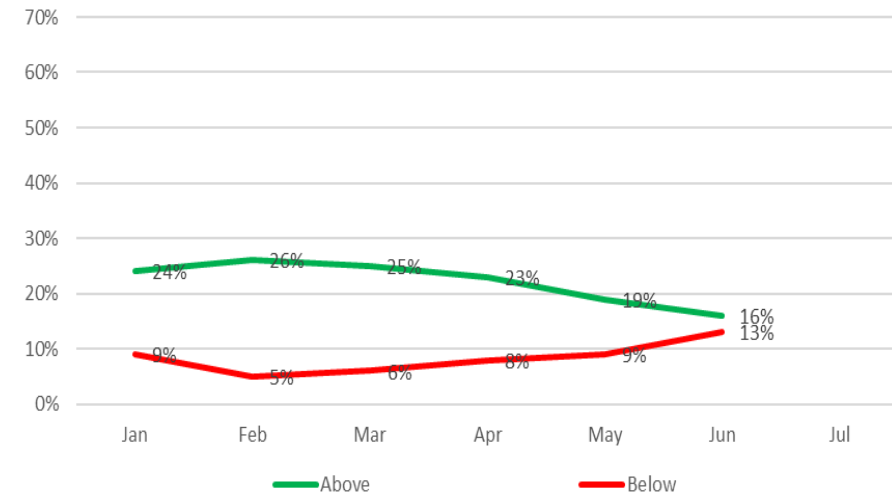
### C2Q24 Growth Expectations



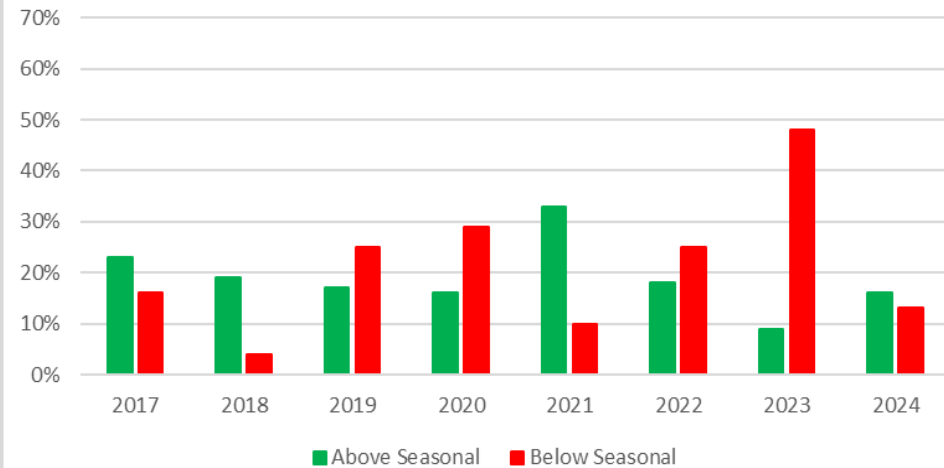
### C2Q Growth Expectations vs. C1Q



### C2Q24 Seasonality Expectations



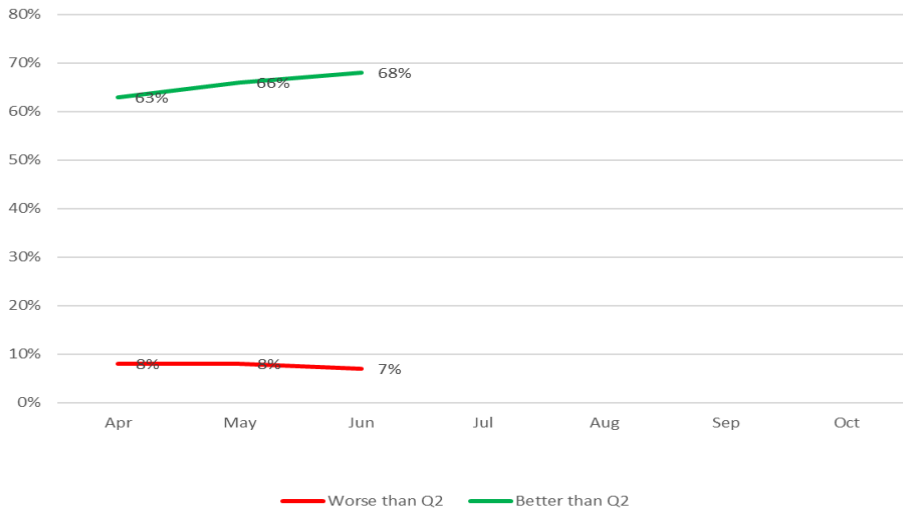
### C2Q Seasonality Expectations



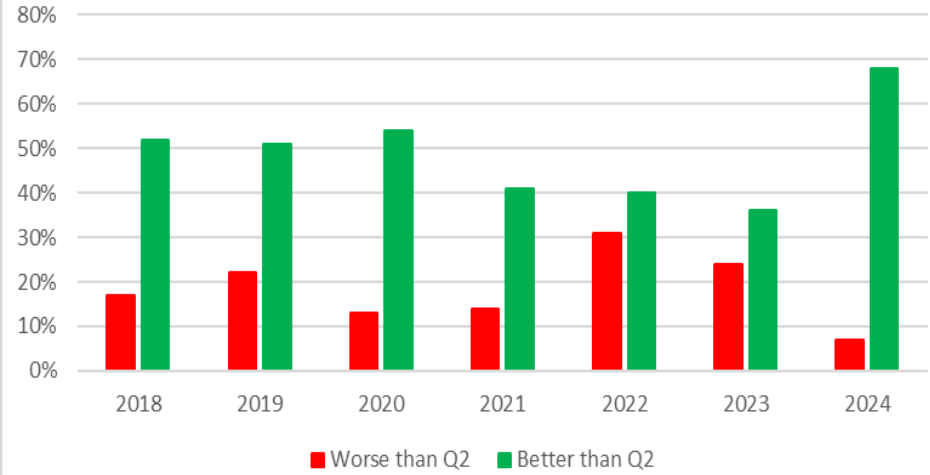
# C3Q24 Outlook

C3Q outlook shows growth expectations exceeding the previous 6 years

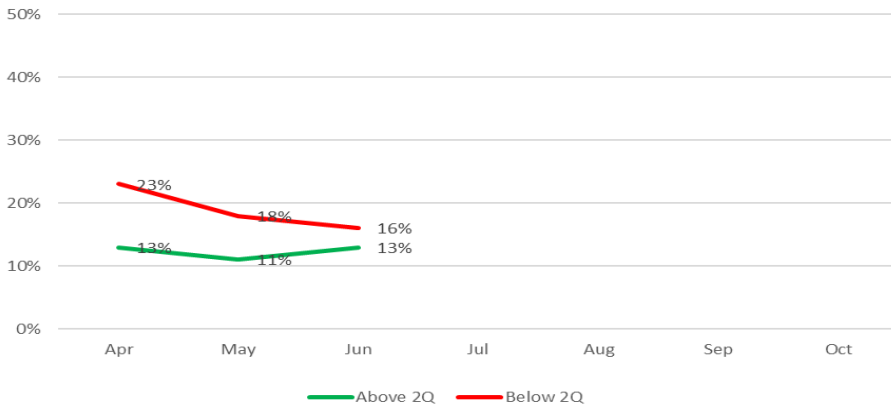
C3Q24 Growth Expectations



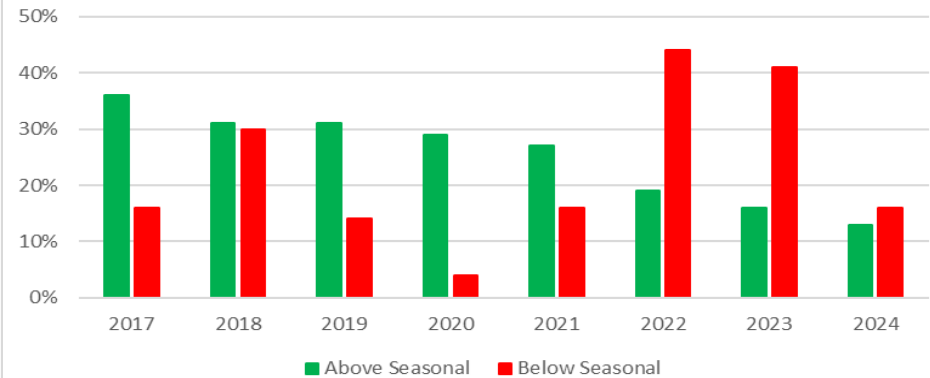
C3Q Growth Expectations vs. C2Q



3Q23 Seasonality Expectations



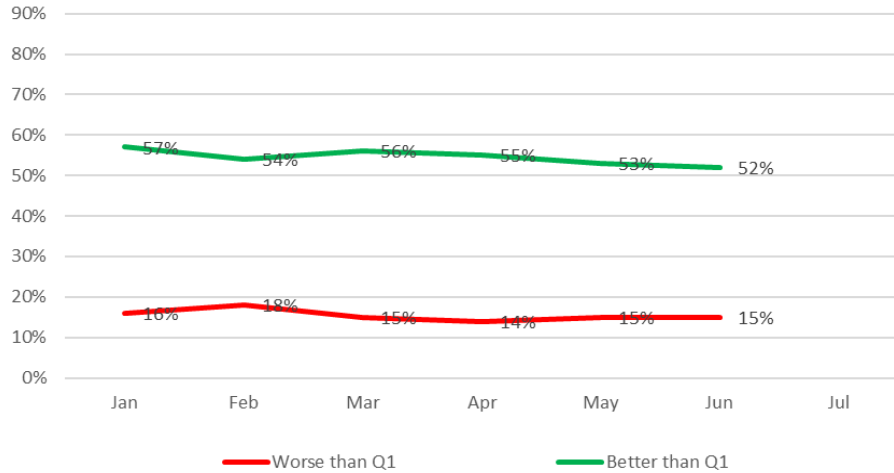
C3Q Seasonality Expectations



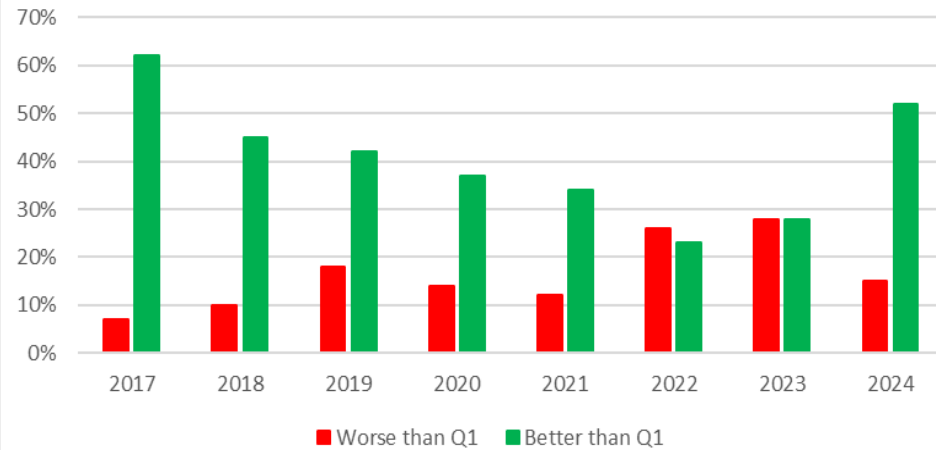
# Bookings Outlook

C3Q outlook shows bookings outlook at 7-year highs compared to previous Q3's.

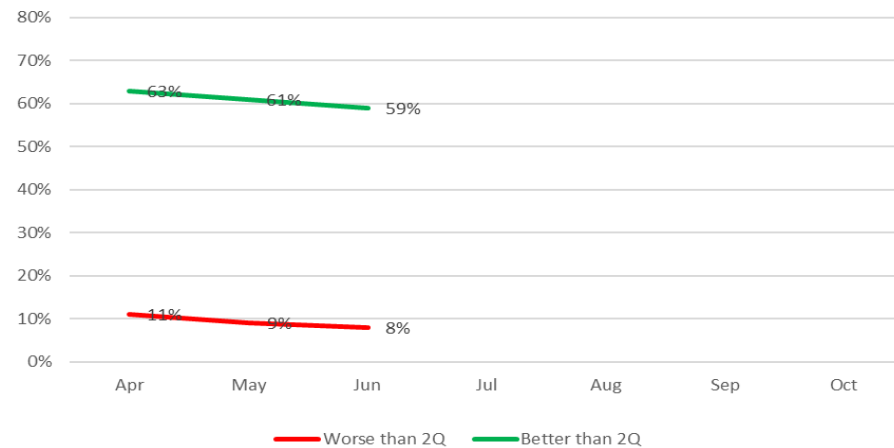
### C2Q24 Bookings Expectations



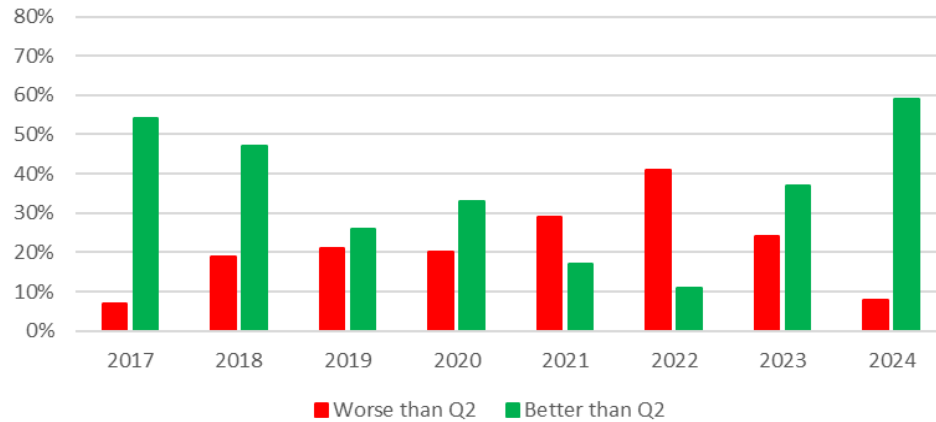
### C2Q Bookings Expectations



### C3Q23 Bookings Expectations

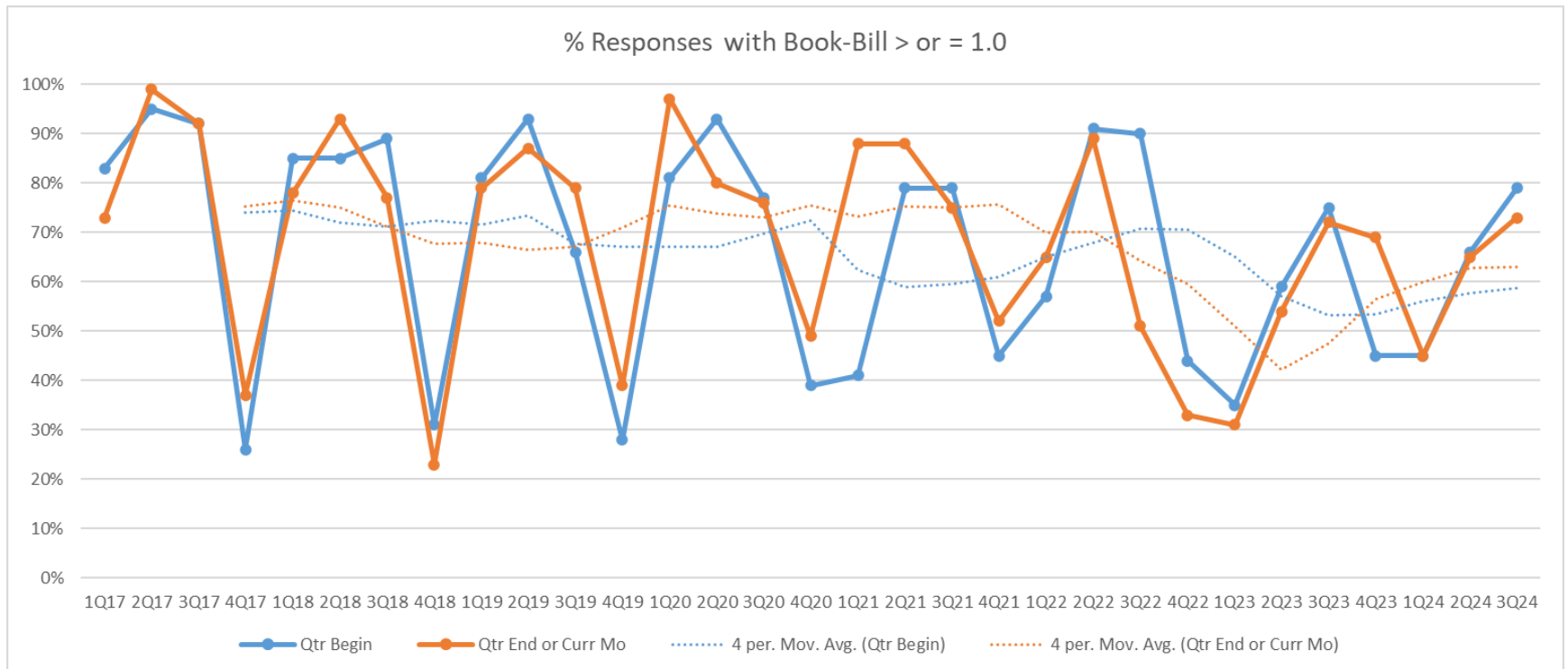


### C3Q Bookings Expectations



# Book to Bill History & Trends

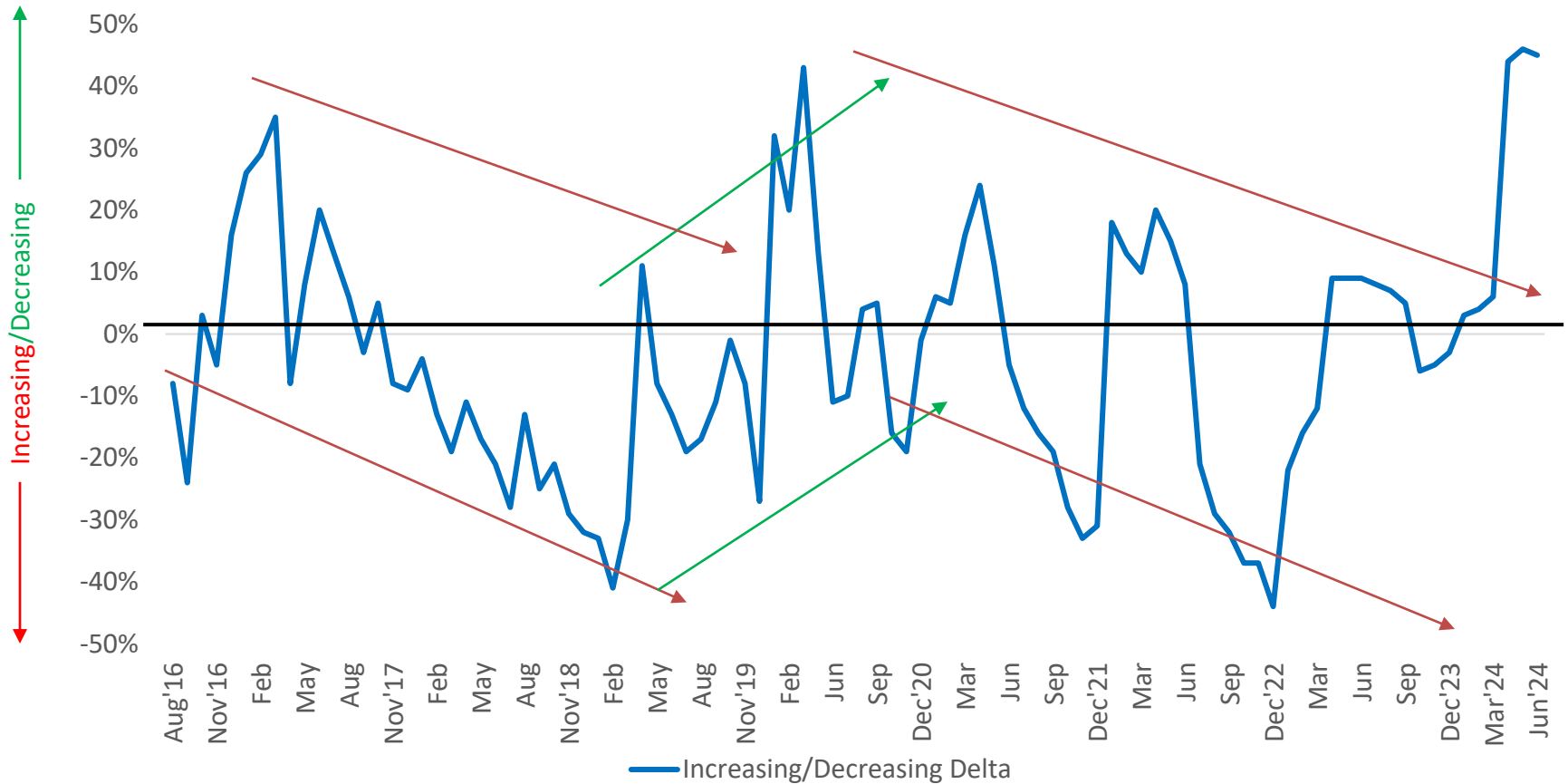
(Calendar quarters)



# Backlog Order Push Outs/Cancellations vs. 30 Days Ago

(Delta between increasing and decreasing cancellations – Higher % is more positive)

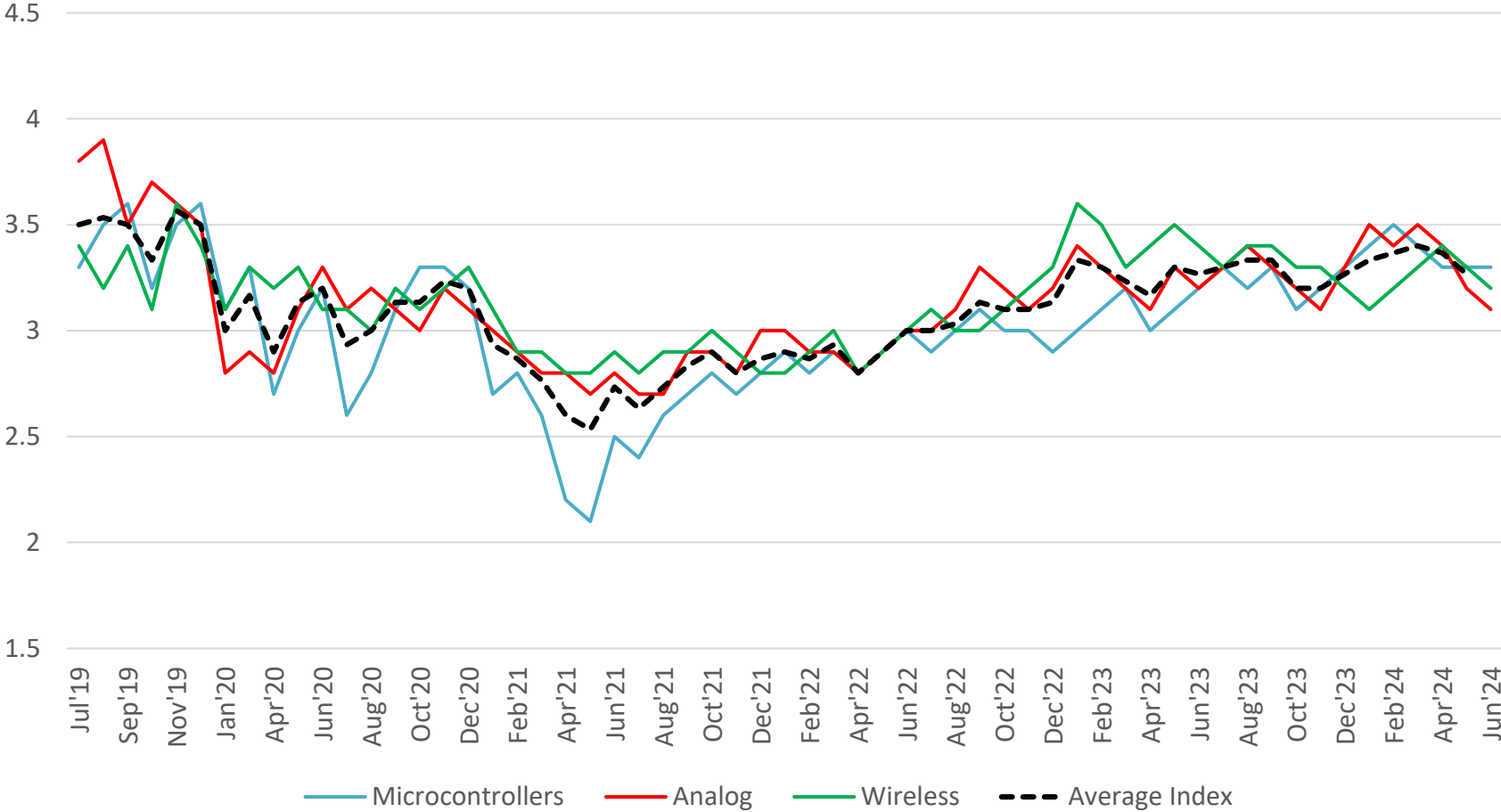
Cancellation/reschedules expectations have decreased to their lowest level in 7 years over the last 2 months indicating that inventory depletion has reached final stages and restocking can begin.





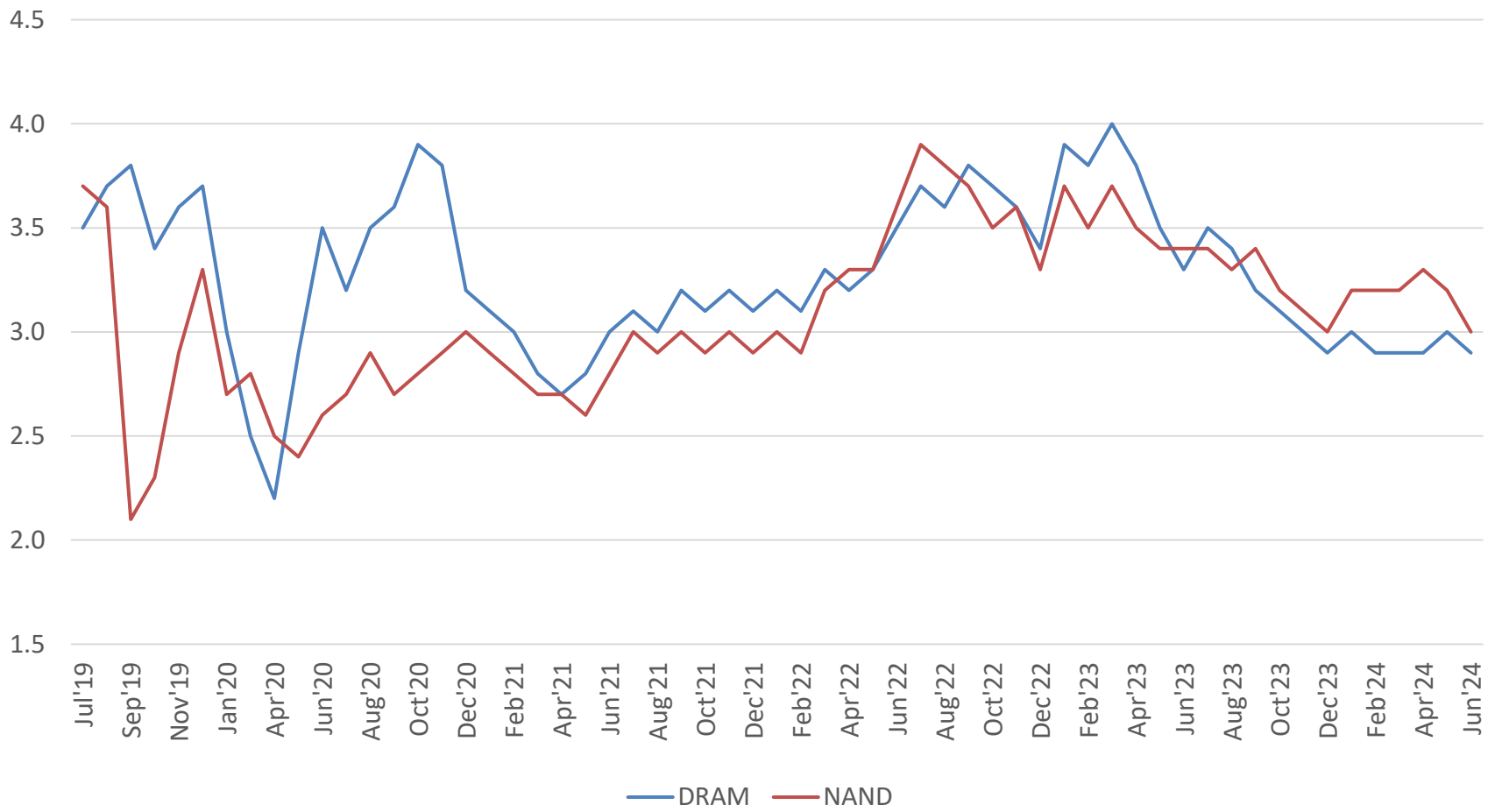
# Component Inventory Status (x-Memory)

(Using a scale of 1 to 5 with 1 being extremely low inventory, 3 being the normal amount, and 5 being extremely high; how do you view inventory levels for the following products?)



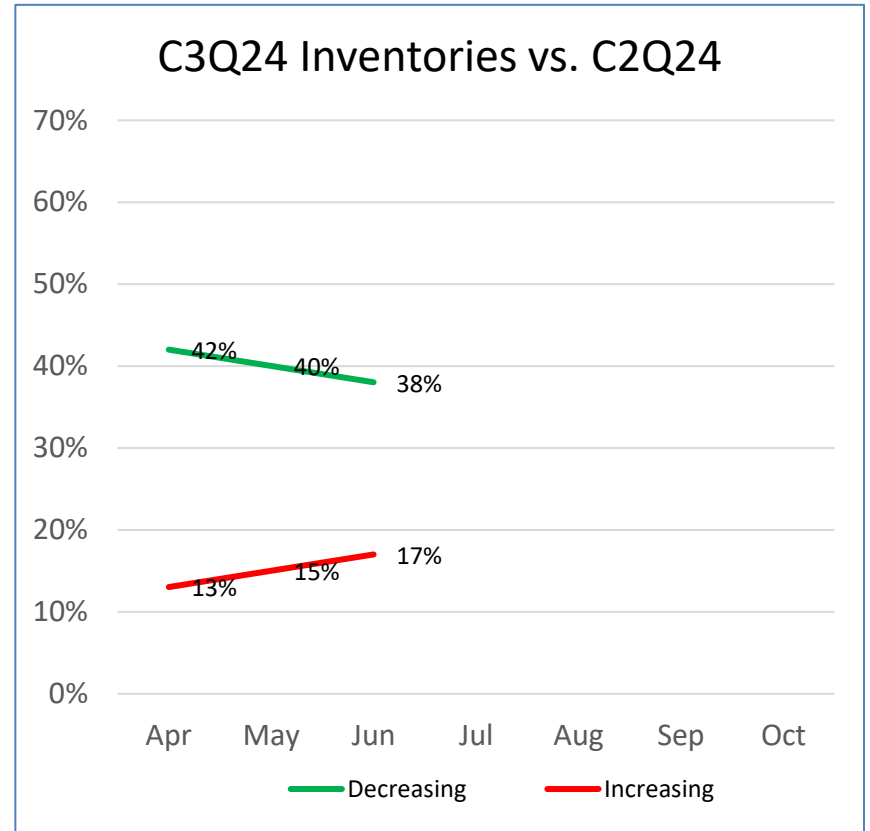
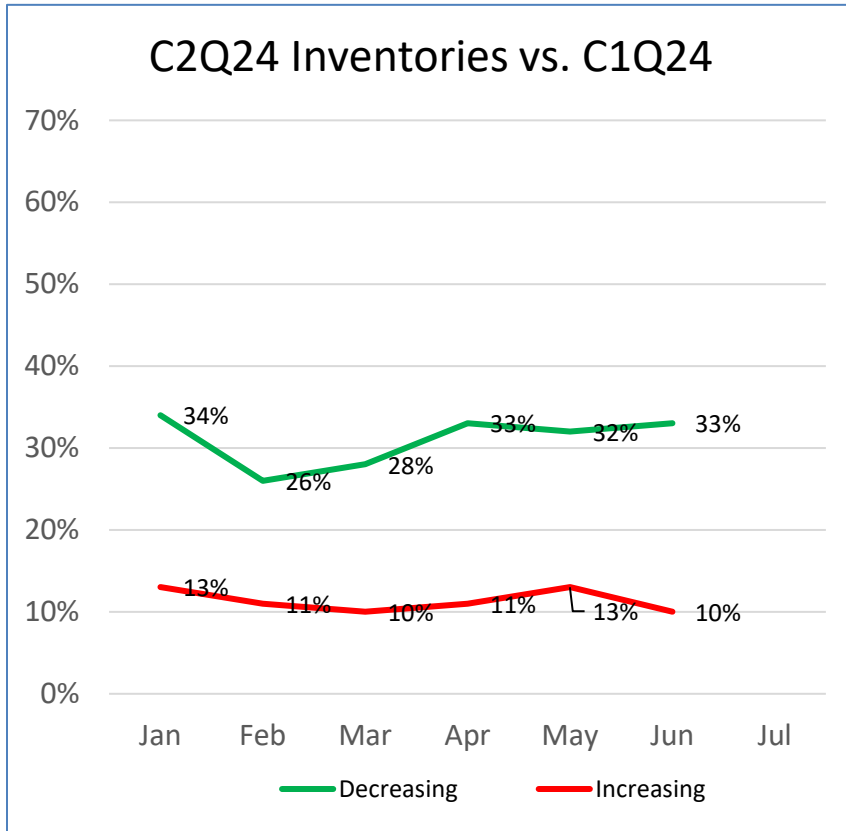
# Memory Inventory Status

(Using a scale of 1 to 5 with 1 being extremely low inventory, 3 being the normal amount, and 5 being extremely high; how do you view inventory levels for the following memory products?)



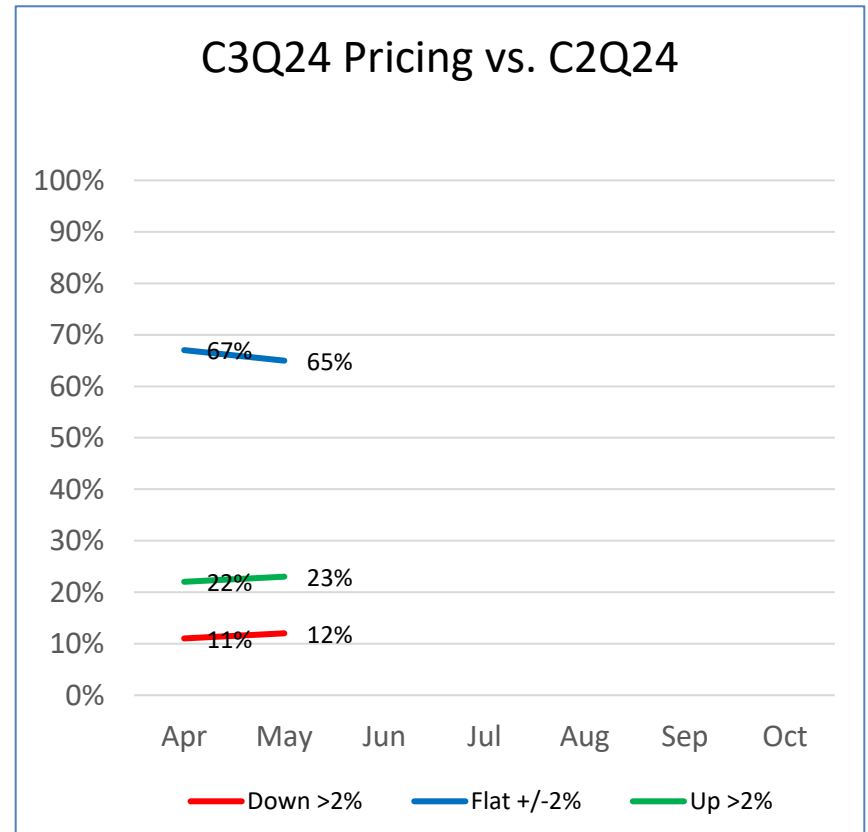
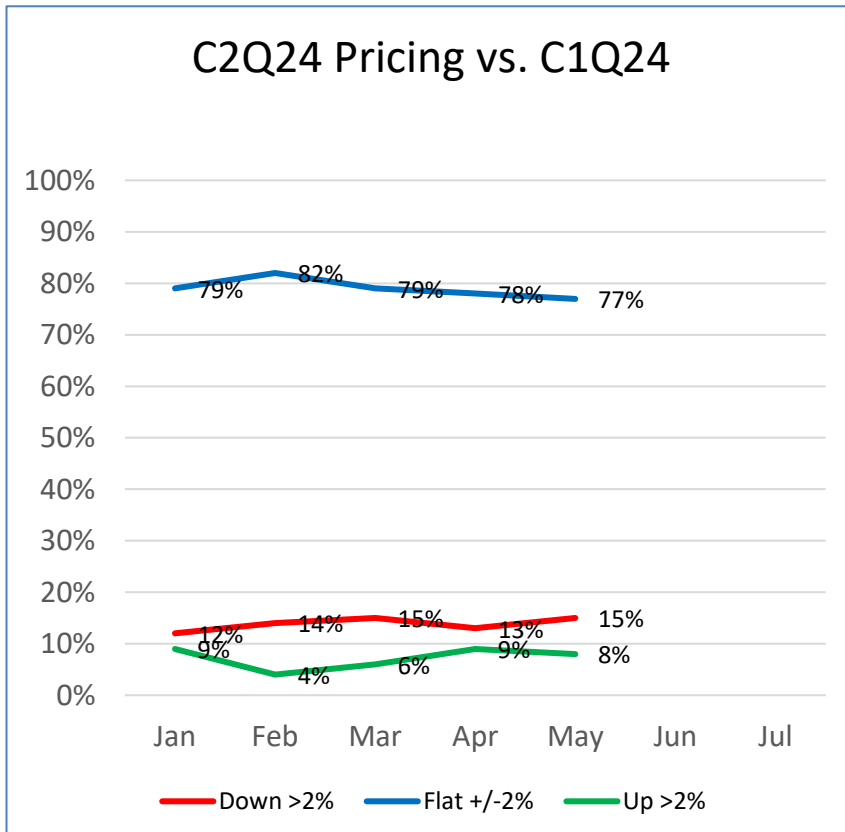
# Q/Q Inventory Growth

Inventory levels showed modest increases for C3Q.



# Q/Q Pricing Trends

Pricing is starting to stabilize and, in some instances, starting to increase in some areas (high end MCU's and some analog.



# Vertical Outlook

Auto continues to move sideways, but we are seeing consumer starting to recover.

